

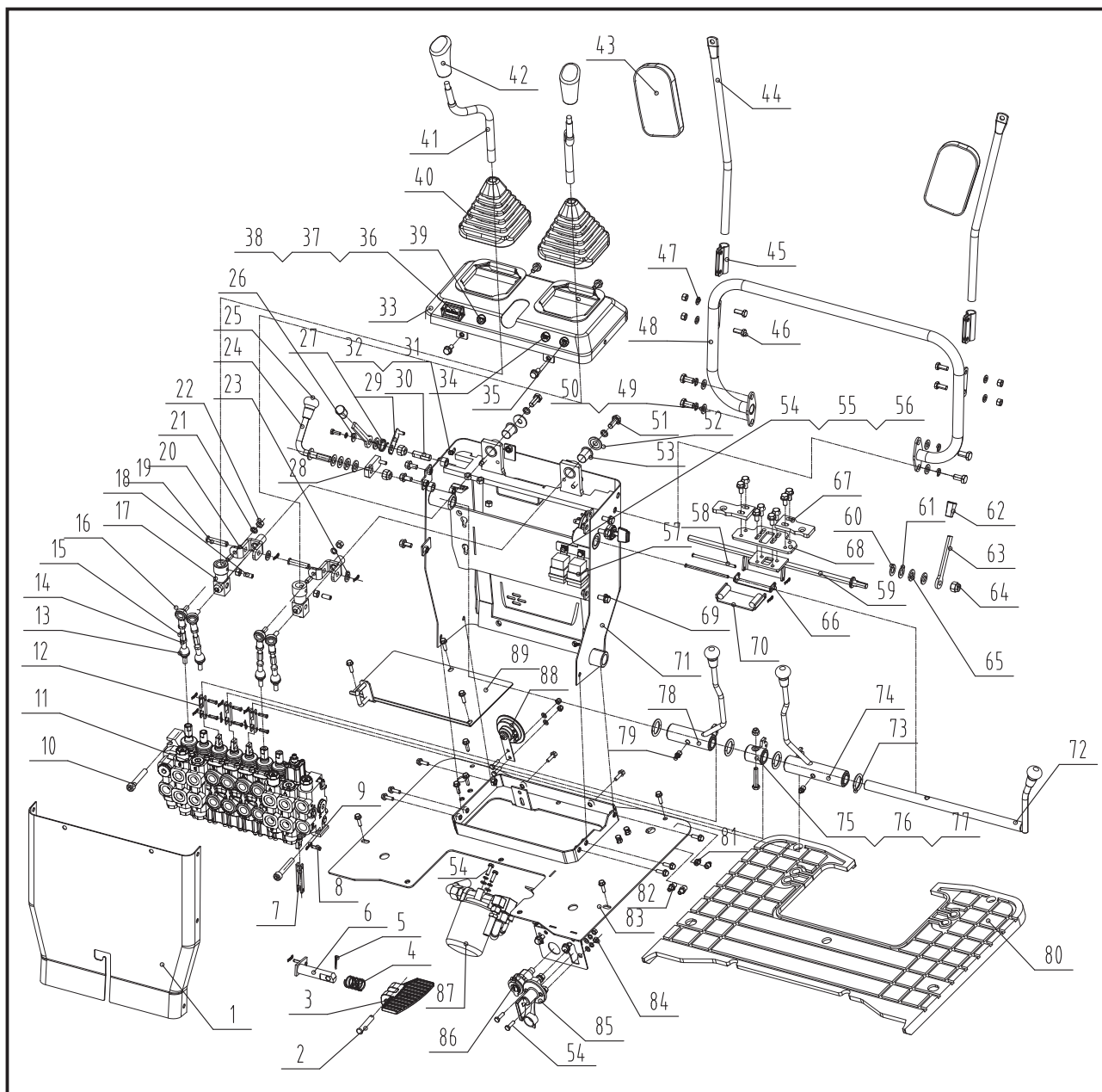
Parts List

GB

No.	Description	Q'ty
1	Oil Filter	1
2	Oil Suction Angle Connector	1
3	Oil Suction Pipe	1
4	Pump Inlet Angle Connector	1
5	Double Gear Pump	1
6	Angle Connector	2
7	Pump Front Outlet Hose	1
8	Pump Rear Outlet Hose	1
9	Transition Joint G3/8-M14x1.5	8
10	Angle Connector	2
11	Multi-way Valve Assembly	1
12	Straight Connector	6
13	G1/2 Hollow Bolt	2
14	Travel Motors Oil Hose	3
15	Angle Connector	20
16	Rotary Motor	1
17	Rotary Motor Oil Hose	1
18	Oil Hose 1 for Bucket Arm Cylinder	1
19	Valve-Swivel Joint Oil Hose (C,E)	2
20	Bucket Cylinder Oil Hose 1	1
21	Oil Hose 2 for Bucket Arm Cylinder	1
22	Valve-Swivel Joint Oil Hose (D,F)	2
23	Bucket Cylinder Oil Hose 2	1
24	Boom Cylinder Oil Hose 2	1
25	Side Swing Cylinder Oil Hose 2	1
26	Bonded Washer	8
27	Side Swing Cylinder Oil Hose 1	1
28	Boom Cylinder	1

No.	Description	Q'ty
29	Centre Swival Joint	1
30	Right Travel Motor Oil Hose	1
31	Dozer Cylinder Oil Hose 2	1
32	Travel Motor Oil Drain Hose	2
33	Dozer Cylinder Oil Hose 1	1
34	Straight Connector	3
35	Hydraulic Motor	2
36	Dozer Cylinder	1
37	Swival Joint Oil Drain Hose	1
38	Rotary Motor Oil Drain Hose	1
39	Oil Return Hose	1
40	Oil Return Filter	1
41	Four-way Joint	1
42	Bucket Arm Cylinder	1
43	Bucket Cylinder	1
44	Side Swing Cylinder	1
45	Boom Cylinder Oil Hose 1	1
46	G1/2-G1/4 Through-core connector	6
47	Bonded Washer	11
48	Bonded Washer	3
49	Straight Connector (with shutoff)	2
50	Rotary Motor Oil Hose	1
51	Angle Connector	1
52	Oil Return Hose	1
53	Straight Connector	1
54	Bucket Cylinder Oil Hose	2
55	Extended Nipple	2
56	Valve-Swivel Joint Oil Hose (A)	1
57	Valve-Swivel Joint Oil Hose (B)	1

PARTS DIAGRAM



Parts List

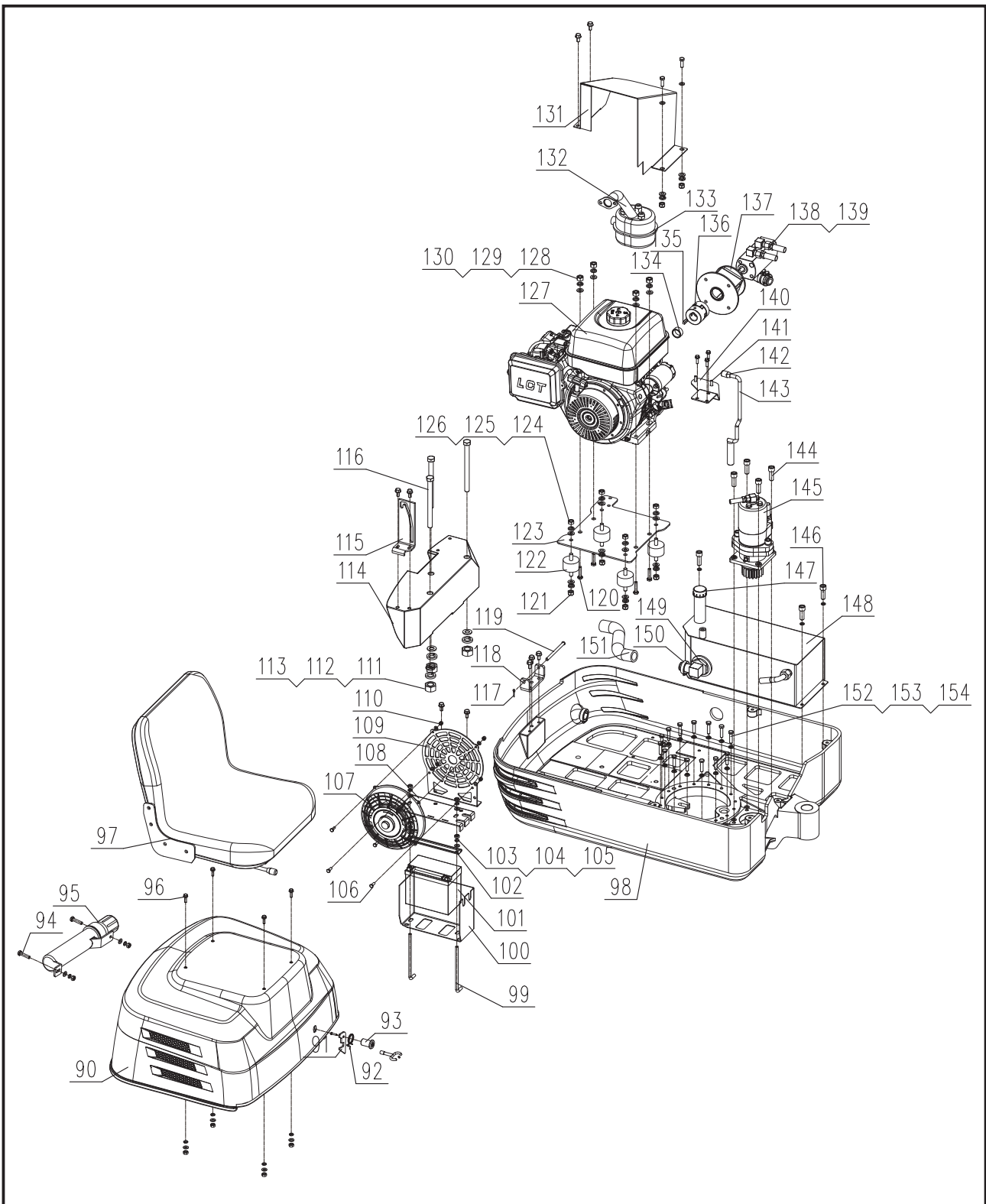
No.	Description	Q'ty
1	Control Cabinet- Rear Plate	1
2	Pedal Pin Shaft D10x55	1
3	Boom Swing Pedal	1
4	Pedal Shaft Spring	1
5	Pedal Pin Shaft - Cotter Pin D2x16	1
6	Boom Swing Pedal-Shaft Weldment	1

No.	Description	Q'ty
7	Valve Bottom Connecting Rod	1
8	Connecting Rod- Shaft Pin D5x18	7
9	Connecting Rod- Cotter Pin D1.5x16	11
10	Screw M10x60	2
11	Multi-Way Valve Assembly	1
12	Connecting Rod	3

No.	Description	Q'ty
13	Straight Joint Bearing M8	2
14	Nut M8	4
15	Connecting Rod M8x80	4
16	Elbow Lever Knob Joint Bearing SQ8-RS JB/T5306	2
17	Operating Control Lever-Direction Block	2
18	Screw M8x25	4
19	Universal Support Pin Shaft 10x45	2
20	Operating Control Lever-Universal Joint Weldment	2
21	Spring Washer D8	12
22	Nut M8	8
23	Flat Washer D10	6
24	Cable Lever Weldment	1
25	Dozer Ball Knob	4
26	Big Washer D6	1
27	Choke Torsion Spring	1
28	Throttle Cable Plate Weldment	1
29	Choke Cable Plate Weldment	1
30	Choke Lever Shaft	1
31	Lock Nut M5	1
32	Bolt M5x10	1
33	Control Cabinet- Top Plate Wedment	1
34	Horn Button	1
35	Headlamp Button	1
36	Timer	1
37	Screw M4x14	2
38	Lock Nut M4	2
39	Power Indicator Light	1
40	Drive Lever Sleeve	2
41	Left/Right Drive Lever	2
42	Operating Ball Knob	2
43	Rearview Mirror	2
44	Rearview Mirror- Supporting Tube	2
45	Rearview Mirror- Frame	2
46	Bolt M8x25	6
47	Flat Washer D8	4
48	Handle Weldment	1
49	Flat Washer D10	4
50	Spring Washer D10	6
51	Bolt M10-20	6

No.	Description	Q'ty
52	Large Washer A4	2
53	Copper Sleeve	2
54	Bolt M6x16	9
55	Spring Washer D6	9
56	Flat Washer D6	9
57	Electric Relay	2
58	Pin D5x100	2
59	Lever Lock Rotating Shaft Weldment	1
60	Anti-Slip Wear Washer	4
61	Washer D12	4
62	Locking Handle	2
63	Locking Lever	2
64	Lock Nut M12	3
65	Wave Spring Washer D12	2
66	Lock Plugboard-MiddleConnecting Plate	1
67	Left/Right Lock Plugboard	2
68	Locking Plate for Operating Lever	1
69	Flange Bolt M8x16	37
70	Lock Plugboard Weldment	1
71	Operation Dashboard- Front Guard Plate	1
72	Rotating Shaft Weldment	1
73	O-Ring 34x4	4
74	Right Handle Weldment	1
75	Dozer Shaft Sleeve Weldment	1
76	Bolt M8x45	1
77	Lock Nut M8	1
78	Left Handle Weldment	1
79	Grease Cup M6X1	2
80	Rubber Pads	1
81	Grease Cup M10	2
82	PD610 Straight Fitting	2
83	Control Cabinet- End Plate Wedment	1
84	Nut M6	2
85	Battery Negative Switch	1
86	Cigarette Lighter Socket	1
87	Oil Filter	1
88	Horn (DC12V 105dB high)	1
89	Engine Cover Plate Weldment	1

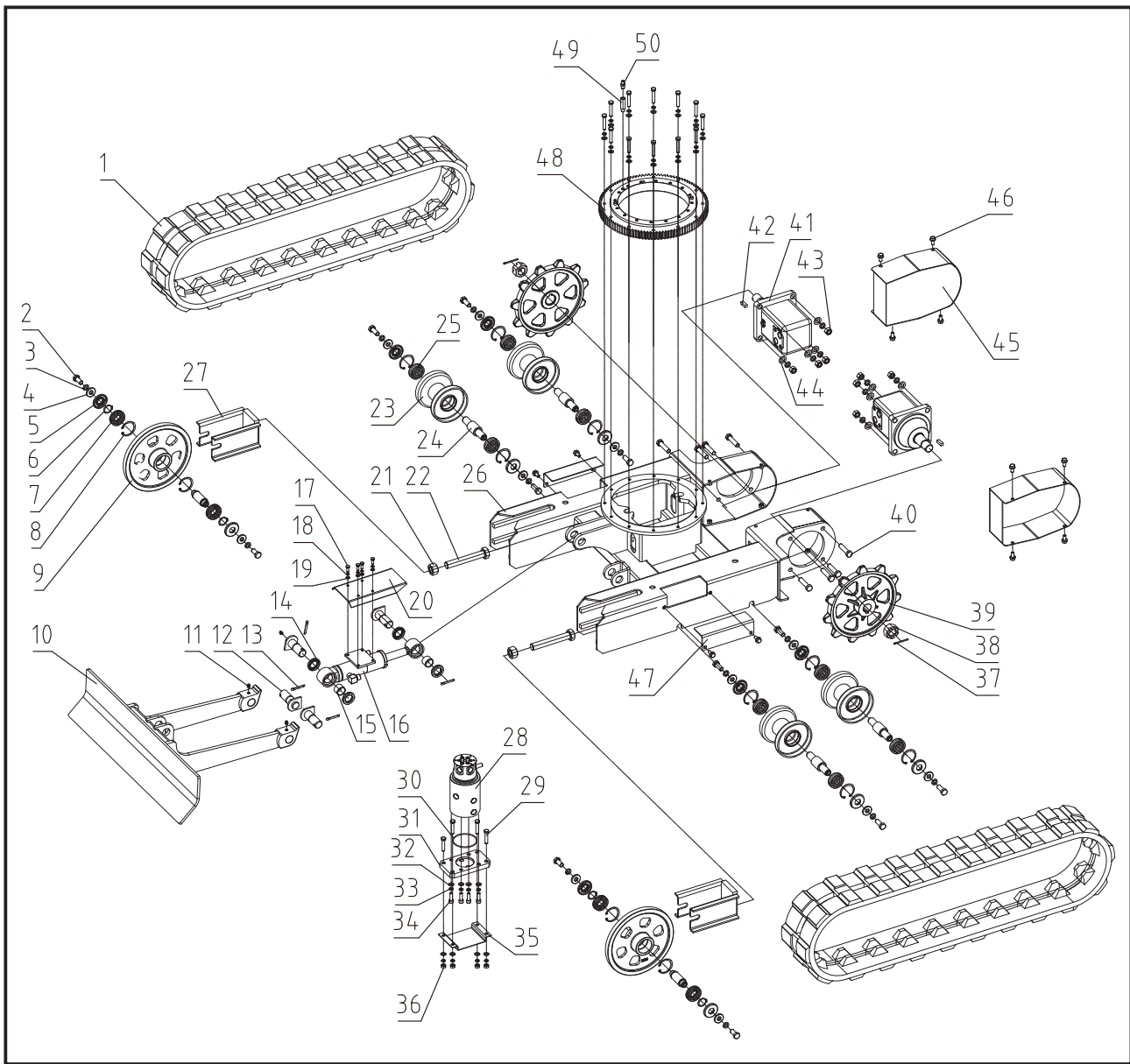
GB



No.	Description	Q'ty
90	Engine Cover Weldment	1
91	Lock Hook	1
92	Torsion Spring	1
93	40mm Triangle-Lock Core With Key	1
94	Bolt M8x25	2
95	Manual Storage Cylinder	1
96	Bolt M8x16	16
97	Excavator integrated seat (with slide)	1
98	Swing Unit Platform	1
99	Battery Lock Hook	2
100	Battery Mounting plate	1
101	Battery	1
102	Battery Fixing Plate	1
103	Spring Washer 8	31
104	Flat Washer 8	33
105	Nut M8	15
106	Screw M6x14	4
107	Fan	1
108	Battery Cover Wedment	1
109	Cooling Fan Mounting Frame	1
110	Lock Nut M6	4
111	Nut M14	3
112	Flat Washer 14	3
113	Spring Washer 14	3
114	Counter Weight	1
115	Motor Cover Turnover Support	1
116	Bolt M14x170	3
117	Cotter Pin 2x16	1
118	Motor Cover Mounting Base	1
119	Pin 8x110	1
120	Bolt M12x35	4
121	All Metal Lock Nut M10	4

No.	Description	Q'ty
122	Shock Absorber	4
123	Engine Mounting Plate Wedment	1
124	Nut M10	4
125	Flat Washer 10	8
126	Spring Washer 10	12
127	Engine	1
128	Nut M12	4
129	Spring Washer 12	4
130	Spring Washer 12	4
131	Engine Guard Plate	1
132	Connecting Hose Wedment For Muffler	1
133	Muffler - Inside Tank	1
134	Coupler Sleeve	1
135	Key 7x7x23	1
136	Coupler KSP24	1
137	Gear Pump Frame	1
138	Gear Pump	1
139	Bolt M8x150	2
140	Muffler Frame	1
141	Bolt M6x16	2
142	Locking Pin Handlebar sleeve	1
143	Locking Pin Weldment	1
144	Screw M10x35	4
145	Rotary Motor Assy	1
146	Screw M8x25	3
147	Hydraulic Oil Tank Cover	3
148	Hydraulic Oil Tank Wedment	1
149	Oil suction filter	1
150	Hose Clamp	2
151	Suction Hose	1
152	Bolt M8x45	16

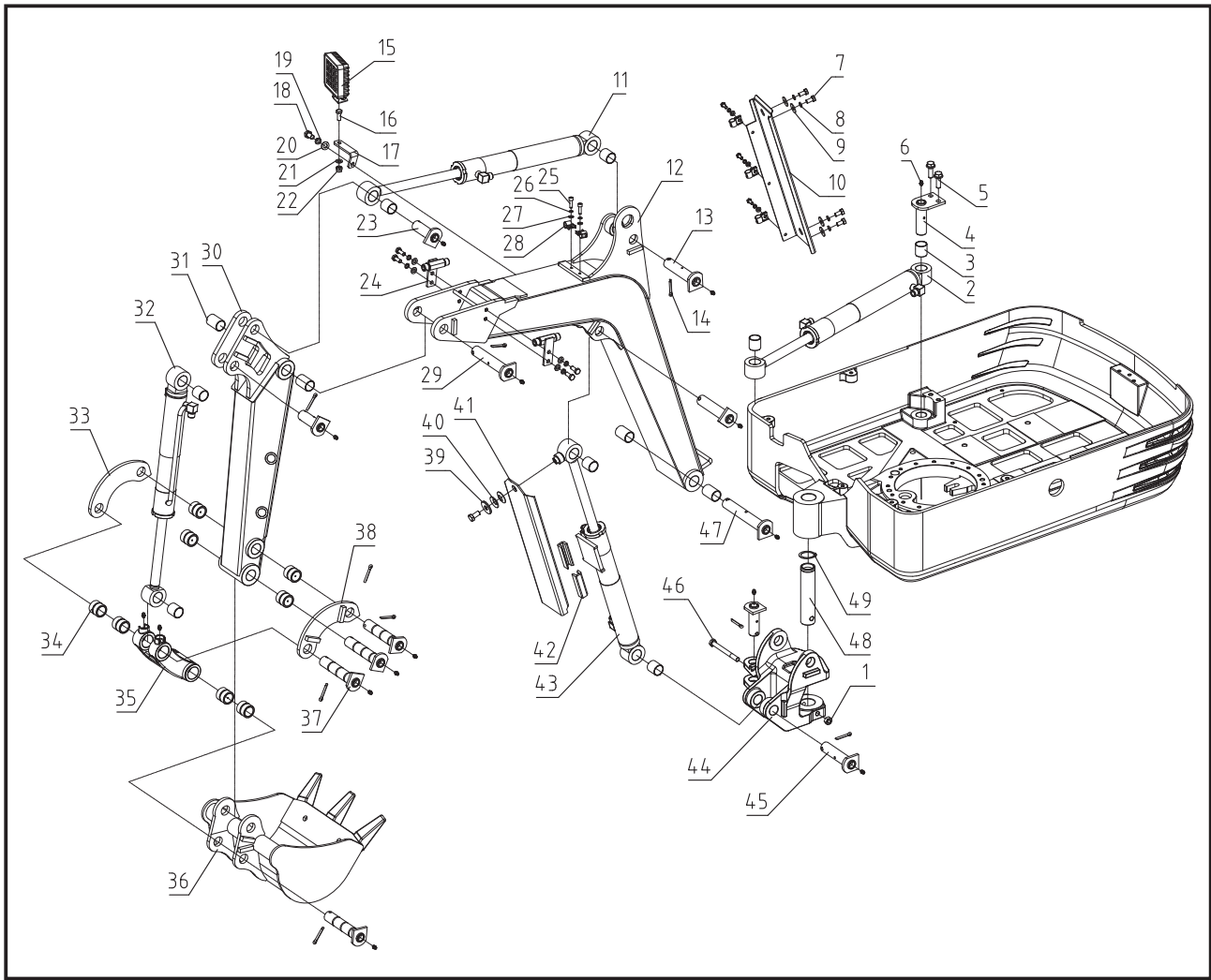
GB



No.	Description	Q'ty
1	Rubber Track 150x72x32	2
2	Bolt M12x30	12
3	Spring Washer 12	28
4	Washer	12
5	Seal B20x47x7	12
6	Circlip A25	4
7	Bearing 6005-2Rs	4
8	Circlip A47	12
9	Front Idler	2
10	Dozer	1
11	Oil Cup M6x1	2
12	Dozer Pin Shaft Weldment	4
13	Cotter Pin 5x35	4
14	Seal B25x40x7	4
15	RCB-20 Boundary Lubricating Bearing	2
16	Dozer Cylinder	1
17	Bolt M6x16	17
18	Spring Washer 6	26
19	Flat Washer 6	20
20	Dozer Cylinder Guard Plate	1
21	Nut M20	2
22	Hex Bolt M20x130	2
23	Supporting Roller	4
24	Supporting Roller Axle	4
25	Bearing 6204-2Rs	8

No.	Description	Q'ty
26	Base Weldment	1
27	Front Idler Fixing Frame	2
28	Central Swivel	1
29	Bolt M8x45	32
30	O-Ring D72x3.1	1
31	Central Swivel Mounting Plate	1
32	Flat Washer 8	58
33	Spring Washer 8	58
34	Screw M8x25	11
35	Central Swivel Guard Plate	1
36	Nut M8	28
37	Cotter Pin 4x45	2
38	Axle Nut 1-20UNEF	2
39	Drive Sprocket	2
40	Bolt M12x45	8
41	Hydraulic Motor	2
42	Arch Key ϕ 25.4x7	2
43	Hexagon Lock Nut M12	8
44	Flat Washer 12	23
45	Motor Cover Weldment	2
46	Flange Bolt M8x16	69
47	Track-tension Adjusting Hole Cover	2
48	Central Swing Circular Support	1
49	Central Swing Circular Support-Lubricating Joint	1
50	Straight Fitting PD610(With Neck Bush)	4

GB



No.	Description	Q'ty
1	Lock Nut M10	1
2	Boom Swing Cylinder	1
3	RCB-20 Boundary Lubricating Bearing 28x25x35	8
4	Boom Swing Cylinder-Rear Pin Weldment	1
5	Flange Bolt M8x16	2
6	Oil Cup M6	16
7	Blot 8x16	4
8	Spring Washer 8	8
9	Flat Washer 8	4
10	Boom Upper-hose Cover-Plate Weldment	1
11	Arm Cylinder	1
12	Boom Weldment	1
13	Boom Pin Shaft Weldment	2
14	Cotter Pin 5x35	12
15	Work Light	1
16	Bolt M8x20	7
17	Light Mounting Plate	1
18	Bolt M10x20	2
19	Spring Washer 10	1
20	Flat Washer 10	1
21	Flat Washer 8	5
22	Lock Nut M8	1
23	Arm Cylinder Pin Shaft Weldment	3
24	Transition Fitting	2
25	Bolt M6x20	5

No.	Description	Q'ty
26	Spring Washer 6	5
27	Flat Washer 6	5
28	Connecting Pipe Clamp R-type	5
29	Arm Cylinder Pin Shaft Weldment	1
30	Arm Weldment	1
31	RCB-20 Boundary Lubricating Bearing 28x25x40	4
32	Bucket Cylinder	1
33	Arm Rocker-Right	1
34	Bucket Shaft Sleeve	8
35	Connecting Rod	1
36	Shovel Weldment	1
37	Shovel Pin Weldment	4
38	Arm Rocker-Left	1
39	Flat Washer 10	1
40	Wing Spring	2
41	Boom Cylinder-Guide Plate	1
42	Guide Plastic Block	2
43	Boom Up&Down Cylinder	1
44	Boom Swing Frame	1
45	Boom Swing Frame- Pin Shaft Weldment II	1
46	Bolt M10x100	1
47	Boom Swing Frame- Pin Shaft Weldment I	1
48	Boom Swing Frame Pin Shaft 35x155	1
49	Circlip A35	1

GB