

MANUAL SWEEPER GUIDE

Model 750



Please make sure you read the instruction manual below and clear the operation before you use this sweeper.

SPECIFICATION

Working Width	750mm
Container	50L
Working Efficiency	3,000 m ² /hr
Drive	Manual
Net Weight	12 kg
Packing Size	820mm x 770mm x 330mm

STANDARD PRODUCTS AND SPARE PARTS IN THE BOX



Sweeper body



Tube handel 1 set



Handle holder 2pcs



Turning knob 4 Set



Instruction manual 1pcs

The spare parts item No. mentioned below please refer to the explosion drawing.

ASSEMBLY

HANDEL TUBE ASSEMBLY

1.Assemble the handle to the sweeper body

Attach the handle holder (38) to the stand sheet (30);
Connect the sliding handle tube to the handle holder and stand sheet with the turning knob.



2.Connect the Adjustable Handle tube (1) with the Sliding Handle tube(8)

Make sure the bolt holes on both tube in one line;
Three holes of different height on the Adjustable handle;
Select the height according to practical needs.



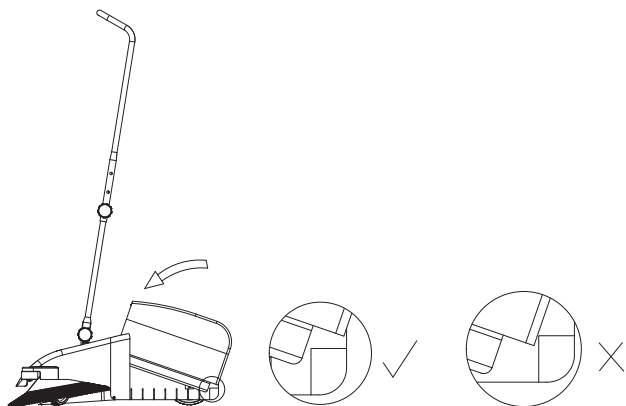
CONTAINER DETACH AND ASSEMBLY

1. CONTAINER DETACH



One hand hold the handle tube, the other hand hold the container handle (2). Pull and lift the container handle upward and backward.

2. CONTAINER ASSEMBLY



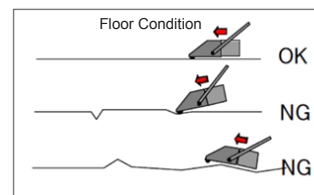
Set the container bottom in the frame, make sure the back groove of the container is in place of the step of the frame; Press the container front and lock it with the front body of the sweeper.



OPERATION



- 1.Hand pushing action. Extremely easy to use. Normal walking speed recommended.
- 2.Suitable for wet and dry use including sawdust, metal filings, leaves, stones, cigarette butts, papers, cans, cups, broken glass, large debris, sand and dirt.
- 3.Works on all surfaces including workshops, driveways, walkways, store fronts, patios, garages, pool side;
- 4.While sweeping, the carrying capacity of the waste container can be maximized by lifting the front to allow the waste to fall to the back of the container;
- 5.When sweeping, small traces of fine dust may remains in the middle of the sweeping machine. This should be cleaned regularly for best result.
- 6.The surface should be competitive flat with no big pit.



EMPTYING WASTE CONTAINER

Detach the container, and empty the container waste into trash can.



BRUSH ADJUSTMENT

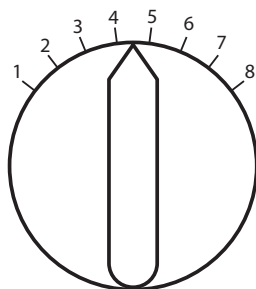
The adjustment knob for the circular broom is located on the front.

Turn right to lower. Turn left to raise.

Step 1-2 for new brooms, all even, hard floors like asphalt, concrete or tiles.

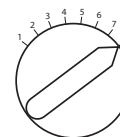
Step 3-4 for new brooms, wet leaves, sand, uneven floors like exposed aggregate or concrete tiles.

Step 5-8 for older brooms, or very uneven ground.



BRUSH (CIRCULAR BROOM) REPLACEMENT

1. Set the adjusting knob (31) to the far right side;



2. Pull the inclined wheels (21 /26) strongly and remove it with the axle (20/ 24).

Keep note of the left and right wheels as they must be replaced on same side for normal operation;



3. Pull out the circular broom (18/27) together with the toothed bushing (19).



4. Remove the toothed sleeve.



5. Insert the toothed bushing into the replacement brush

6. Reinsert the brush and ensure it is completely seated into the rod housing.

7. Reinsert the inclined wheel and axle into the rod. Firmly push until the assembly pops into position.



MAINTENANCE

The broom could be clean with water. Avoid hot water or heat air blowing.

Sweeper body could be clean with water. Avoid have it under the blazing sunlight for long time.

Spool cords, thread must removed for best result.

STORAGE

Store the unit against wall to save room space.

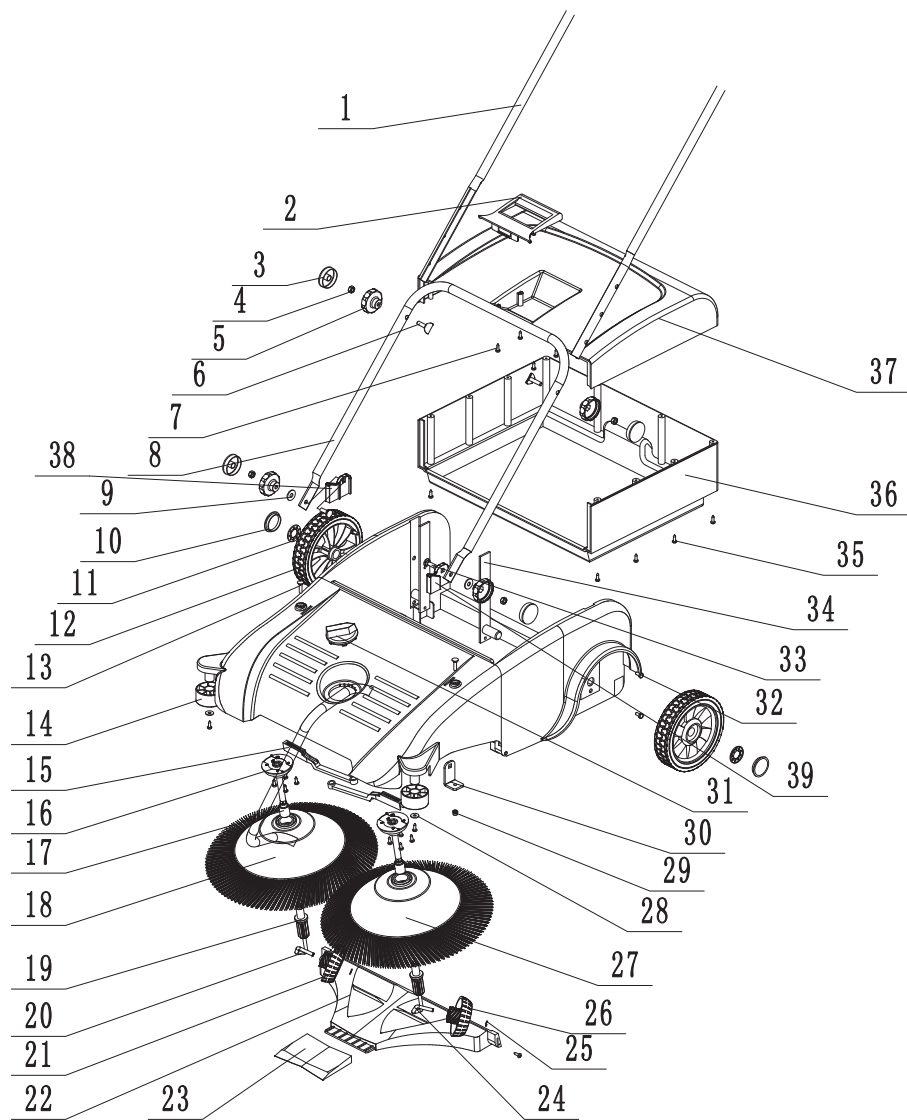
Avoid blazing sunlight, fire and other dangerous place.

PROBLEM TREATMENT

What to do if problem occurs?

1. Check the adjustment of brush pressure;
2. Clean the unit and remove dirt stuck around the brushes or under machine;
3. Lubricate the gear parts;
4. Check and make sure the round brushes can turn around easily.

EXPLOSION DRAWING



1. Adjusting handle tube	1	21. Right inclined wheel	1
2. Container handle	1	22. Collecting plate	1
3. Turning knob cap	1	23. Holder ground board	1
4. Nut M8	4	24. Axle left	1
5. Turning knob	4	25. Washer	6
6. Bolt	2	26. Left inclined wheel	1
7. Screw	2	27. Left circular broom	1
8. Sliding handle tube	1	28. Shim ring	2
9. Washer	2	29. Nut M6	2
10. Wheel cap	2	30. Stand Sheet	2
11. Quick-fastener	2	31. Adjusting Knob	1
12. Wheel Complete	2	32. Bolt M6x10	4
13. Saucer-head Screw M6X30	2	33. Saucer-head screw M8x25	2
14. Lateral guide roller	2	34. Axle	2
15. Adjusting bar	2	35. Screw ST4.8x16	16
16. Axle right	1	36. Debris container	1
17. Bearing 1626	2	37. Debris container upper cover	1
18. Right circular broom	1	38. Handle holder right	1
19. Toothed bushing	2	39. Handle holder left	1
20. Axle right	1		

NOTE:

1. This Unit is designed for outdoor hard floor. Home carpet may not suitable.
2. Before Using, make sure the unit is in good and safe condition;
3. Heavy stone and large size tree branch may unable to be collected;
4. When sweeping very fine dust, small trace may remain in the middle of the machine and a second sweeping is suggested to the best result;
5. Please avoid sweeping long rope yarn like material to avoid brushes tangling and damage;

SAFETY WARNING!

1. When sweeping and operating the machine in front of machine and children, please pay much more attention;
2. Please do not take the unit as toys for children;
3. Please do not let your hair, feet, figures, clothes etc. of your body close to the garbage collecting mouth of the unit;
4. Please do not operate the sweeper barefoot or wearing shoes with figure out;
5. Please do not sweeping stuff of heat, burning or smoking to avoid fire hazard and person injury;
6. Please do not collecting flammable and explosive and stuff and poisonous material;
7. When collecting and empty glasses or material of sharp and with hurting dangerous, please wear safety gloves;
8. Please do not operate and store the unit close to heating source;
9. Please store the unit in safety places;